

Spalding Township

Recreation Plan

2022-2026

Prepared by: Spalding Township Board

Adopted: February 2022

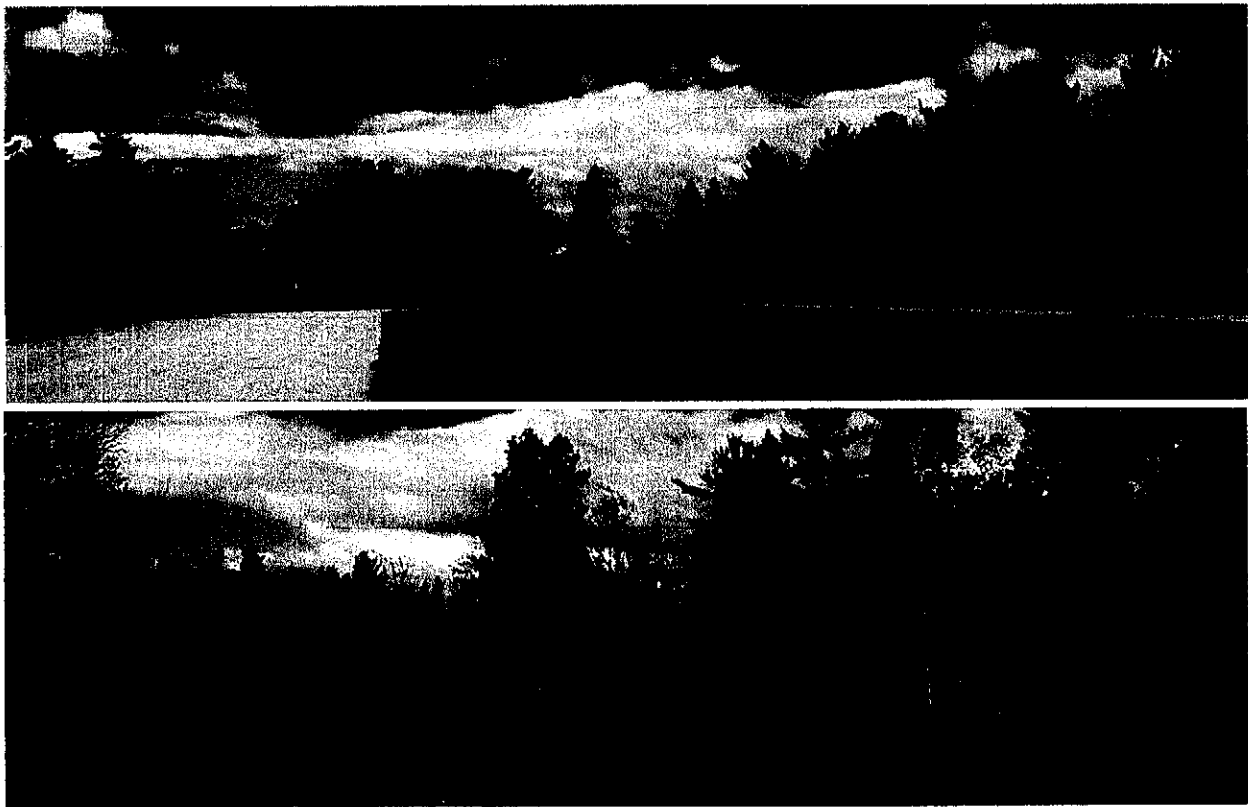


Table of Contents

Community Description & Demographic Data	1
Table 1.1 Population Trends.....	1
Table 1.2 Age Distribution.....	2-4
Table 1.3 Age Demographic and Housing Estimates.....	5
Administrative Structure	6
Table 1.4 Projected Recreation Budget.....	6
Figure 1.1 Spalding Township Park and Recreation Organizational Chart.....	7
Volunteer/Community Relationships	8
Recreational Facility Inventory	8-9
Figure 1.2 Spalding Township Recreation Facilities.....	10
Grant History	11-12
Planning Process	13-15
Goals and Objectives	16-17
Action Plan	17-21

Spalding Township

Menominee County

Community Description & Demographic Data

Spalding Township is located in northern Menominee County, adjoining Marquette and Dickinson counties to the north and northwest and stretching south of the intersection of US-2/41 at Powers. It is located about 40 miles north the City of Menominee, the county seat; about 30 miles east of the Iron Mountain/Kingsford urban areas; and about 25 miles west of the City of Escanaba. The Township, including the Village of Powers which is located within it, has a land area of 162.5 square miles.

Understanding an area’s population trends helps evaluate a community’s existing and future needs. These statistics will assist Spalding Township in determining the direction of local capital improvements and related expenditures for recreation planning. They are also a useful tool in creating recreation guidelines for the Township.

The population change for Spalding Township from 2010 to 2020 decreased by 8 people. As of the 2020 Census, Spalding Township has a population of 1,666 people.

Age distribution groups are also key to understanding the needs of the community. By analyzing not just the population but also what age community members are, the Spalding Township will be able to more clearly grasp the individuals in which they are representing.

The age distribution of Spalding Township is similar to that of Menominee County. The Township and County has a lower percentage of their population in the preschool, school, and working age groups.

Population Trends

Table 1.1

Selected Areas	1970	1980	1990	2000	2010	2020
Spalding Township	1,632	1,842	1,536	1,761	1,674	1,666
Menominee County	24,587	26,201	24,920	25,326	24,029	23,502
Michigan	8,875,083	9,262,078	9,295,297	9,938,444	9,883,640	10,077,331
USA	203,302,031	226,542,199	248,709,873	281,421,906	308,745,538	331,449,281

Table 1.2

598 at or above retirement of
874 from 19-64 yrs. old

AGE AND SEX



Note: This is a modified view of the original table produced by the U.S. Census Bureau. This download or printed version may have missing information from the original table.

<i>874 From 19-64 yrs. old</i>		Spalding township, Menominee County, Michigan	
<i>598 over 65 yrs. old</i>		Total	Percent
Label	Estimate	Margin of Error	
✓ Total population	1,666	±221	
✓ AGE			
Under 5 years	81	±43	
5 to 9 years	86	±42	
10 to 14 years	87	±38	
15 to 19 years	75	±43	
20 to 24 years	88	±41	
25 to 29 years	61	±23	
30 to 34 years	99	±40	
35 to 39 years	79	±40	
40 to 44 years	54	±25	
45 to 49 years	88	±28	
50 to 54 years	162	±37	
55 to 59 years	108	±31	
60 to 64 years	135	±35	
65 to 69 years	132	±37	
70 to 74 years	79	±40	
75 to 79 years	80	±39	
80 to 84 years	69	±39	
85 years and over	103	±58	
✓ SELECTED AGE CATEGORIES			
5 to 14 years	173	±64	
15 to 17 years	52	±34	
Under 18 years	306	±103	
18 to 24 years	111	±52	

Table Notes

AGE AND SEX

Survey/Program: American Community Survey

Year: 2019

Estimates: 5-Year

Table ID: S0101

Although the American Community Survey (ACS) produces population, demographic and housing unit estimates, it is the Census Bureau's Population Estimates Program that produces and disseminates the official estimates of the population for the nation, states, counties, cities, and towns and estimates of housing units for states and counties.

Source: U.S. Census Bureau, 2015-2019 American Community Survey 5-Year Estimates

When information is missing or inconsistent, the Census Bureau logically assigns an acceptable value using the response to a related question or questions. If a logical assignment is not possible, data are filled using a statistical process called allocation, which uses a similar individual or household to provide a donor value. The "Allocated" section is the number of respondents who received an allocated value for a particular subject.

The age dependency ratio is derived by dividing the combined under-18 and 65-and-over populations by the 18-to-64 population and multiplying by 100.

The old-age dependency ratio is derived by dividing the population 65 and over by the 18-to-64 population and multiplying by 100.

The child dependency ratio is derived by dividing the population under 18 by the 18-to-64 population and multiplying by 100.

Data are based on a sample and are subject to sampling variability. The degree of uncertainty for an estimate arising from sampling variability is represented through the use of a margin of error. The value shown here is the 90 percent margin of error. The margin of error can be interpreted roughly as providing a 90 percent probability that the interval defined by the estimate minus the margin of error and the estimate plus the margin of error (the lower and upper confidence bounds) contains the true value. In addition to sampling variability, the ACS estimates are subject to nonsampling error (for a discussion of nonsampling variability, see ACS Technical Documentation). The effect of nonsampling error is not represented in these tables.

The 2015-2019 American Community Survey (ACS) data generally reflect the September 2018 Office of Management and Budget (OMB) delineations of metropolitan and micropolitan statistical areas. In certain instances, the names, codes, and boundaries of the principal cities shown in ACS tables may differ from the OMB delineation lists due to differences in the effective dates of the geographic entities.

Estimates of urban and rural populations, housing units, and characteristics reflect boundaries of urban areas defined based on Census 2010 data. As a result, data for urban and rural areas from the ACS do not necessarily reflect the results of ongoing urbanization.

Explanation of Symbols:

An "***" entry in the margin of error column indicates that either no sample observations or too few sample observations were available to compute a standard error and thus the margin of error. A statistical test is not appropriate.

An "-" entry in the estimate column indicates that either no sample observations or too few sample observations were available to compute an estimate, or a ratio of medians cannot be calculated because one or both of the median estimates falls in the lowest interval or upper interval of an open-ended distribution, or the margin of error associated with a median was larger than the median itself.

error associated with a median was larger than the median itself.

An "-" following a median estimate means the median falls in the lowest interval of an open-ended distribution.

An "+" following a median estimate means the median falls in the upper interval of an open-ended distribution.

An "****" entry in the margin of error column indicates that the median falls in the lowest interval or upper interval of an open-ended distribution. A statistical test is not appropriate.

An "*****" entry in the margin of error column indicates that the estimate is controlled. A statistical test for sampling variability is not appropriate.

An "N" entry in the estimate and margin of error columns indicates that data for this geographic area cannot be displayed because the number of sample cases is too small.

An "(X)" means that the estimate is not applicable or not available.

Supporting documentation on code lists, subject definitions, data accuracy, and statistical testing can be found on the American Community Survey website in the Technical Documentation section.

Sample size and data quality measures (including coverage rates, allocation rates, and response rates) can be found on the American Community Survey website in the Methodology section.

2020 Census

Table 3

ACS DEMOGRAPHIC AND HOUSING ESTIMATES



Note: This is a modified view of the original table produced by the U.S. Census Bureau. This download or printed version may have missing information from the original table.

Spalding township, Menominee County, Michigan

Label	Estimate	Margin of Error
✓ SEX AND AGE		
✓ Total population	1,666	±221
Male	813	±114
Female	853	±131
Sex ratio (males per 100 females)	95.3	±13.0
Under 5 years	81	±43
5 to 9 years	86	±42
10 to 14 years	87	±38
15 to 19 years	75	±43
20 to 24 years	88	±41
25 to 34 years	160	±44
35 to 44 years	133	±55
45 to 54 years	250	±46
55 to 59 years	108	±31
60 to 64 years	135	±35
65 to 74 years	211	±50
75 to 84 years	149	±46
85 years and over	103	±58
Median age (years)	50.9	±3.7
Under 18 years	306	±103
16 years and over	1,412	±166
18 years and over	1,360	±154
21 years and over	1,310	±146
62 years and over	539	±104
65 years and over	463	±104
✓ 18 years and over	1,360	±154

The number of people living in poverty often correlates to economic cycles and educational attainment. Understanding the geographic distribution of poverty in the region is useful as people in this situation are more likely to be in need of public transit and social services. According to 2014 American Community Survey data, Spalding Township has 19.9 percent of population below poverty level.

Utilizing demographic information such as population, age distribution, and population below poverty level in the planning process helps guide how to best create and maintain recreational facilities and programs for the communities in which they serve.

Administrative Structure

Under Public Act 156 of 1917, Spalding Township has established the Township Board as the Recreation Board. Policy and funding matters regarding parks and recreation in Spalding Township are determined by the Township Board. The Board discusses recreation on a regular basis at their meetings and has an annual discussion on recreation needs, facility usage and resource utilization. The Township regularly seeks input from local clubs and organizations dealing with recreation. The Township Board has the authority to commit funds for parks and recreation, accept grants and purchase land on behalf of the community.

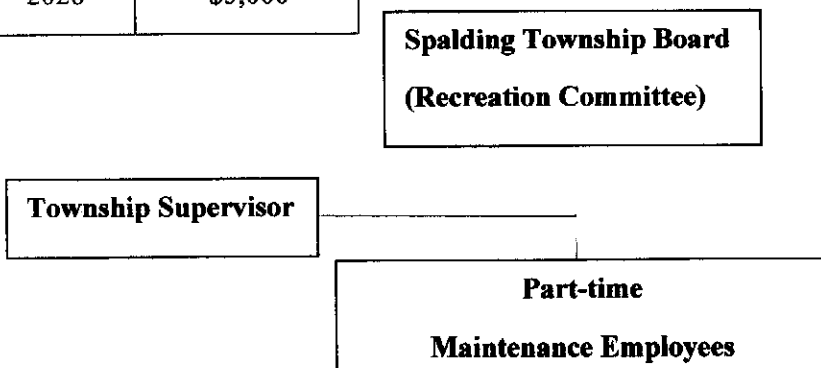
Part-time park maintenance workers employed by the Township are responsible for park upkeep and project implementation. One part-time maintenance worker is responsible for winter park upkeep, which is limited to maintenance related to use by snowmobiles. Two part-time maintenance employees work for the Township through the summer months.

Year	Budget
2022	\$5,000
2023	\$5,000
2024	\$5,000
2025	\$5,000
2026	\$5,000

The Township budgets approximately \$5,000 per year for general recreation activities. These funds are allocated from the general fund. Looking into the next five years, the projected parks and recreation budget will remain within a historically normal range, with potential increases in budget as projects may warrant.

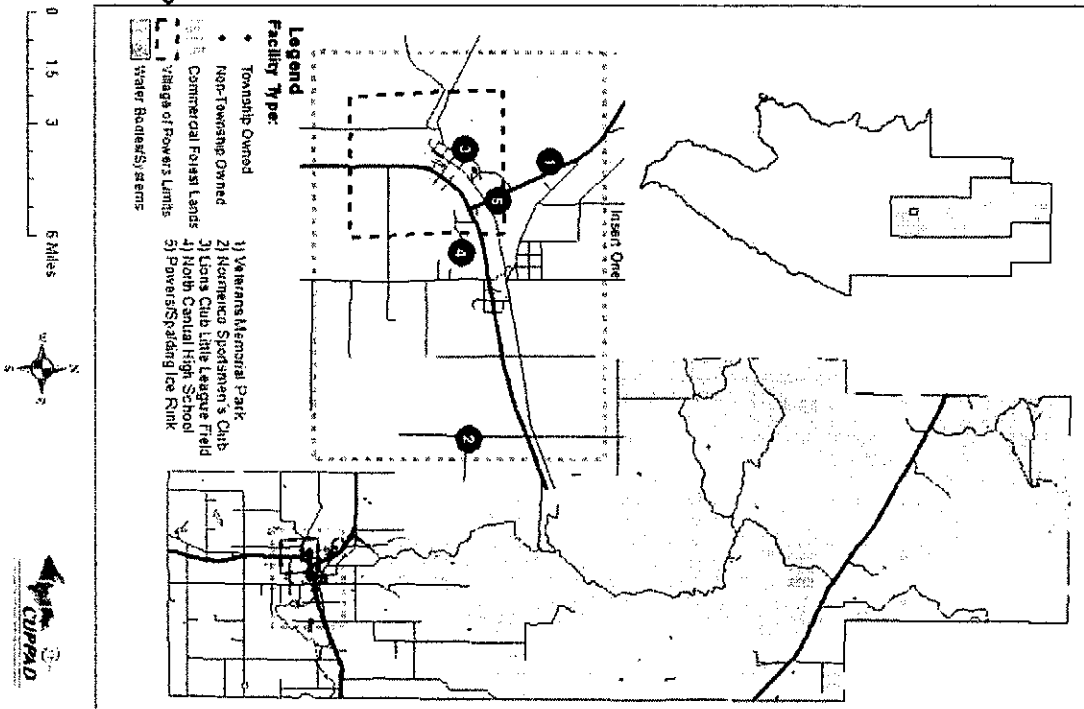
Detailed below is the Spalding Township Park and recreation organizational chart.

Figure 1.1 Spalding Township Park and Recreation Organizational Chart



Spalding Township Recreation Facilities

Figure 1.1



Volunteer/Community Relationships

The Township has had a long and successful relationship with community organizations. When recreation projects arise for the Township, community organizations often donate money or time and labor to the project. The community takes great pride in the involvement of private citizens, businesses and groups that give so freely of their time and financial resources for the betterment of the Township's recreational facilities and programs.

Past community organizations involved with donations include the Lion's Club, American Legion, Sportmen's Club, American Legion Auxiliary, Sons of the American Legion, Lioness Club and individual community residents and private businesses. The Township also works with the North Central Area School District on recreation projects. Students often assist the Township with recreation facilities clean-up and maintenance as part of "Community Days," each May. Volunteers were instrumental in the construction of the new pavilion as well as the recently constructed Veteran's Memorial at Veteran's Memorial Park. Some of the groups involved include: the American Legion, Lion's Club, Normenco Sportmen's Club, Sons of the American Legion, Township volunteers, and several Eagle Scouts.

Recreational Facility Inventory

Within and nearby Spalding Township there are a number of publicly and privately-owned recreational facilities. These facilities provide a wide spectrum of recreational opportunities that township residents and visitors can enjoy year-round.

The accessibility ranking for Veterans Memorial Park was determined by the Township Supervisor after reviewing the 2010 ADA Standards for Accessible Design. A goal of the Spalding Township Recreation Plan is to improve accessibility at all recreation facilities maintained by the Township so all individuals are able to take advantage of recreation opportunities offered in the Township.

Currently the parking lot is paved with designated handicapped parking. A paved path provides access from the parking lot to the barrier-free restroom building and flagpole area. The pathway to the pavilion, playground, basketball courts, rustic campsites, and other bathrooms requires traveling over graded gravel.

Improvements have been made for the pathways leading to the baseball bleachers, tractor pull site, and crossing the pedestrian bridge over the water. Grades of all of these pathways should allow individuals to travel around the park with ease. The pedestrian bridge over the Cedar River could have pathway improvements to create a smooth transition between walking path to the bridge surface. The rustic campsites also need some improvements to improve accessibility of the park, such as paving the campsite roadway. At least one campsite should be designed and designated as handicap accessible. All new improvements done to Veterans Memorial Park will have ADA in mind.

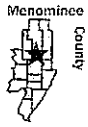
Spalding Township Recreation Sites
Located within Spalding Township

Veterans Memorial Park

Accessibility Assessment Rating: 2

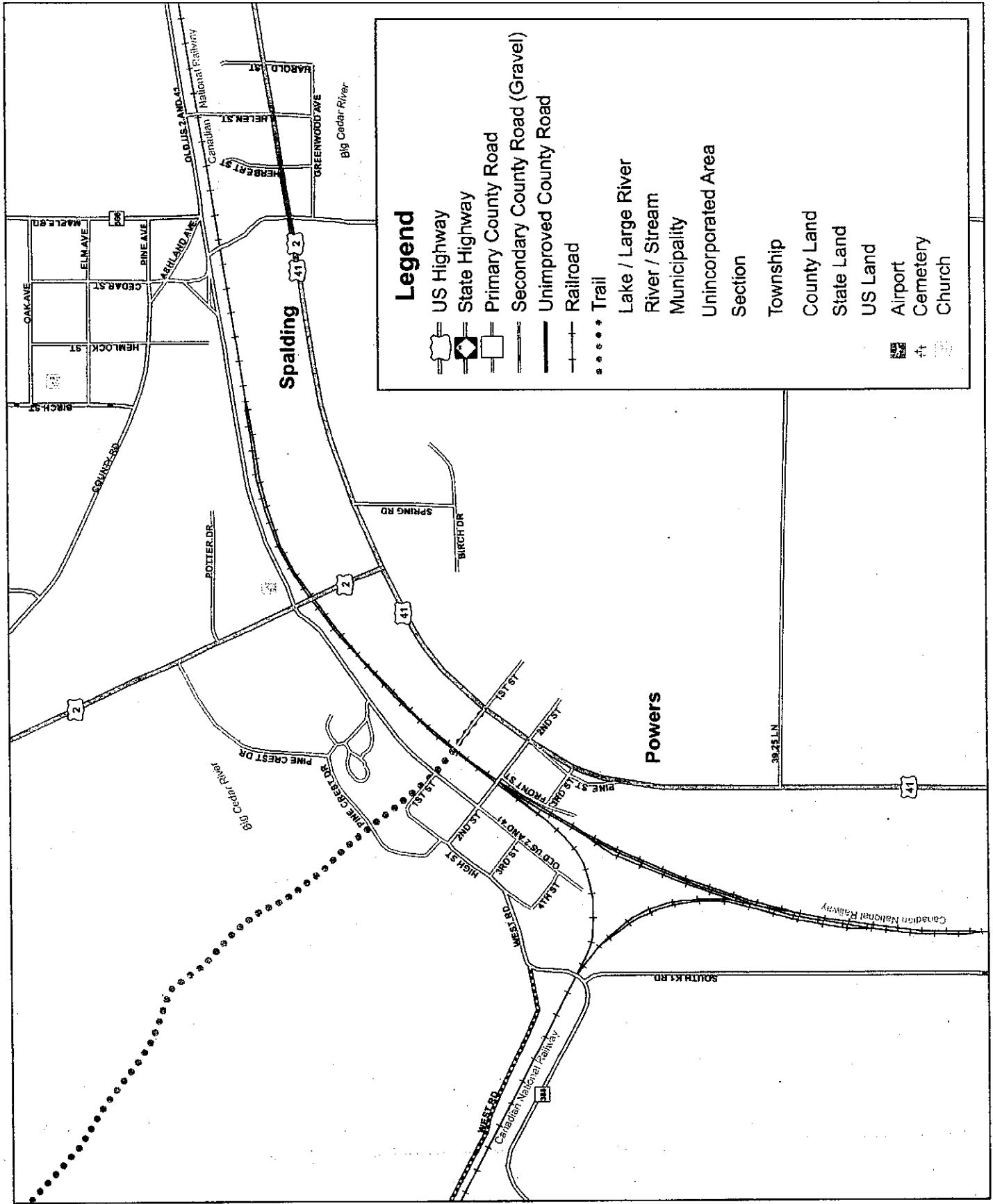
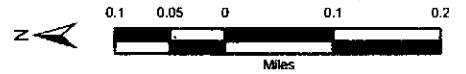
THE TOWNSHIP OWNED VETERANS MEMORIAL PARK IS COMPRISED OF 41.6 ACRES AND IS CONVENIENTLY LOCATED ON US-2. CURRENTLY THE PAVILION IS AVAILABLE TO RENT, WITH A FEE FOR ALL IS \$100 NON-REFUNDABLE DEPOSIT, WITH \$200 TOTAL RENTAL CHARGE. IMPROVEMENTS TO THE PARK HAVE LED TO AN INCREASED USE OF THE FACILITY OVER A GREATER PORTION OF THE YEAR.

- RUSTIC CAMPING SITES
- PLAYGROUND EQUIPMENT
- BASKETBALL COURT(S)
- SOFTBALL FIELD WITH DUGOUTS
- BLEACHERS
- BARRIER-FREE TOILET FACILITIES
- TRUCK-PULLING COMPETITION AREA
- NORMENCO SPORTSMEN'S CLUB SNOWMOBILE TRAIL MEANDERS THROUGH PARK
- ACCESSIBLE PAVILION
- PICNIC AREA
- BEACH AREA
- PARKING AREA
- 4 SECURITY CAMERAS
- VETERAN'S MEMORIAL



VILLAGES OF POWERS & SPALDING Figure 1.2

APPENDIX D



Legend

- US Highway
- State Highway
- Primary County Road
- Secondary County Road (Gravel)
- Unimproved County Road
- Railroad
- Trail
- Lake / Large River
- River / Stream
- Municipality
- Unincorporated Area
- Section
- Township
- County Land
- State Land
- US Land
- Airport
- Cemetery
- Church

North Central Area Schools

This district-owned property offers several recreations opportunities. The Community Schools program offers recreational activities including Pop Warner football, adult volleyball, softball, flag football, swimming lessons, Tee ball for youngsters and baseball for other youth & summer basketball camp for students and a tot lot during the summer.

- *Playground equipment *Football field
- * Basketball courts * Gymnasium

Lions Club Little League Field

The Lions Club Little League Field is located behind the Pinecrest Medical Care Facility in the Village of Powers.

Spalding to LaBranche Snowmobile Trail

The Michigan Department of Natural Resources maintains Right-of-way for the Spalding to LaBranche Snowmobile trail which connects to a network of trails. The Soo Line Railroad Trail was recently completed which connects Hermansville through Spalding-Powers to Escanaba

Grant History

Applicant	App. No.	Project Title	Grant Amount
Spalding Township	TF15-0148	Veterans Memorial Park Improvement Project	\$81,900.00
Description: Development to construct over 3,000 feet of new nature trails throughout the park, enhancing the park for both day-use and campground visitors. The limestone trail will include a 350-foot boardwalk through the park’s wetlands. Interpretive signage along the rail will educate the public about local flora and fauna. The park serves as a major trailhead for both the Iron Belle Trail and State ATV and snowmobile trails, with parking. Dark-sky compliant LED lighting in the park area will facilitate wintertime night use and deter vandalism without adding light pollution. Year; 2015. PA Executed			

Applicant	App. No.	Project Title	Grant Amount
Spalding Township	TF95-240	Veterans Park Expansion	\$37,500.00
<p>Description: Acquisition of approximately 80 acres to provide additional outdoor recreation opportunities and additional river access at Veteran's Park, an existing 80-acre site on the Big Cedar River</p> <p>Year 1995, Grant Withdrawn</p>			

Applicant	App. No.	Project Title	Grant Amount
Spalding Township	BF89-517	Veteran's Park Campground	\$32,175.00
<p>Description: Develop 20-site rustic campground, access road, shower building and vault toilet facilities on the Big Cedar River.</p> <p>Year 1989, Grant Closed</p>			

Applicant	App. No.	Project Title	Grant Amount
Spalding Township	26-00316	Spalding Township Recreation Area	\$3,500.00
<p>Description: This closed 1972 grant was used to develop one acre of the recreation area to include a multi-purpose court, fencing and basketball court with fencing.</p> <p>Year: 1972, Grant Closed</p>			

The Township has received four grants through the Michigan Department of Natural Resources, one of which was withdrawn.

Planning Process

The Spalding Township portion of the Regional Recreation Plan was updated to correspond with the changing recreation needs of the area. The Spalding Township Board was instrumental in preparing this plan as they took the time to evaluate current recreation facilities, and to reach out to those that utilize recreational parks and facilities. CUPPAD Regional Commission staff met with the Spalding Township Board while creating a draft of the plan. Township official prepared a draft recreation plan. There was also valuable public input as well.

Meetings were arranged with members of the Township Board to discuss recreation planning within Spalding Township. These discussions throughout the year 2021, resulted in the updated text of the Recreation Plan by the Township Board. Members encouraged all interested parties to offer suggestions for recreational improvements that might be included in the new plan. Public input on the Recreation Plan was requested at a regular Township Board meeting held in November and December of 2021; the recreation development schedule was discussed. A public hearing to discuss the recreation plan was held on January 9, 2022 at the Township Hall.

The plan outlines the facilities and programs to be developed in Spalding Township during the next five years. The Township Board will continually examine the recreational needs of the community and amend the plan as needed.

This plan will provide a foundation for Township action to improve the quality and quantity of recreation opportunities in the Township.

At a meeting held November 2021 several ideas regarding future recreation projects were expressed. The township supervisor envisioned the establishment of a canoe/kayak launch dock, as well as the creation of the canoe/kayak route. One Trustee suggested the Township Board apply for grants other than to the MDNR. A suggestion of adding electricity to the campground in 2018 was made. A member of the public and another township trustee would like to see improvements made at Veterans Memorial Park pavilion including a moveable wall on the sides for wind protection, and upgrades at the kitchen. It was suggested some of these improvements could be accomplished using township funds.

A Survey was also given out to people to help provide insight into what members of the community, or nearby communities, would want to see and their current recreation activities. During the survey, sixty-five people responded, and their results are compiled below.

- 1) Please select what best describes your residency?
 - Year-around Spalding Township resident was 63.08%
 - Seasonal resident 3.08%
 - I live in a nearby community 33.85%

- 2) In the last year, how often have you or a member of your household visited Veterans Memorial Park?
 - None 7.96%
 - 1-3 Visits 49.23%

- 1-3 Visits 49.23%
- 4-6 Visits 15.38%
- 7 + Visits 27.69%

3) Does Veterans Memorial Park meet the recreational needs of the community?

- Yes 67.69%
- No 6.15%
- Additional comments include (26.15%): The vast majority of additional comments say the park is well maintained. However, there are some that believe extensive park maintains is needed to make Veterans Park more desirable. Most of this criticism said the park needs more/new playground equipment that works for younger children. Others believe the pavilion needs to have the ability to be closed off from the elements. A dumping site, electricity, and water for the campsites, and a better kitchen in the pavilion. Providing more opportunities for hiking and walking and to take advantage of the Cedar River. Lastly, the cost is believed to be too high for using the pavilion, and it should be lowered.

4) Citizens were asked if the township does an adequate job at maintaining its recreational facilities 87.69% say yes, while 12.31% say no. Does the community utilize the current recreational facilities 67.69% say yes, while 32.31% say no. Are Spalding Townships recreation facilities have universal accessibility 98.46% say yes, while 1.54% say no. Some people also committed saying: lighting in the bathroom needs to be imported; basketball courts improvements; cleanliness; also a Frisbee golf course would be something to bring in tourists and give children something to do during the summer; some believe that the pavilion fee is too high since local taxpayers paid to make it and it should be lowered; pathway improvements; and for the pavilion kitchen to be turned into a certified kitchen, and to promote camping. All of which should be a priority when addressing the future of the township' recreational facilities.

5) Citizens were also asked what other area recreational facilities do they use and why they use them. Some individuals use the parks in Escanaba stating those parks have better restroom and playground facilities. The Sportsman Club shooting range and the Bark River Senior Center were also mentioned as other places used. The Bark River Senior Center is used because of its certified kitchen and can be used year round. The Hermansville Pond was also mentioned as a place to visit since the baseball and volleyball courts are in better condition. The City of Iron Mountain was mentioned since it has a disc golf course and Escanaba since it has a better playground and bathrooms.

6) In the last year, what recreational activities have you or your member of your household participated in?

- Playground visits 55.7%
- Walking/hiking 54.1%

- Kayaking/canoeing 39.3%
- Baseball 36%
- Watching wildlife & golfing 32.8%
- Ice skating 29.5%
- Picnicking 27.9%
- Snowmobiling & football 26.2%
- Frisbee Golf 24.2%
- Road biking 21.3%
- Beach volleyball 16.4%
- Downhill Skiing & Snowshoeing 9.8%
- Cross country skiing & rollerblading 8.2%
- Mountain biking 6.5%
- Soccer & Tennis 4.9%
- Some other recreational activities that were mentioned are skateboarding, community events, pictures, wedding, hunting/shooting, Pokémon hunting, family reunions, and geocaching.

Several improvements were made in the last five years.

- 7) People also provided comments on existing non-motorized, motorized, and multi-use trails in Spalding Township. The following comments come from this question: someone would like to see higher trail connectivity between all communities in Northern Menominee County. While others noted they'd like to see more projects that are non-motorized and those would include: bike lanes on main roads and highways, no wheeled vehicles on groomed trails during the winter, and to have a walking trail along the river with bird nesting boxes, fishing spots along the trail.
- 8) Age brackets of survey participants were also taken, and those include: 73.85% is less than 25 years old, 9.23% is between 26-45 years old, 12.31% is between 46-60 years old, and 4.62% is over 61 years old.
- 9) Individuals were also asked the question if their household has children less than ten years of age, 30.77% said yes, while 69.23% said no.

Goals and Objectives

The objectives identified in this plan help guide recreation related decision-making. Consideration of the recreational policies should lead the community toward the attainment of its goals. The following goals and objectives should serve as guideline toward development strategies.

Goal – Provide a variety of recreational opportunities to the residents and visitors of Spalding Township.

Objectives

- Projects should be easily accessible to all Township residents, including the elderly and handicapped.
- All parks and facilities will be compliable with the principles of universal design.
- Whenever or wherever possible, facilities should be for multiple and/or year-round use.
- Proposed projects should eliminate identified recreational deficiencies as described in this plan.
- The Township should make maximum use of state and federal assistance programs to acquire and develop recreation areas and facilities.
- Coordinate recreation planning and implementation activities to avoid duplicity of services and effort to make optimal use of financial and other resources.
- User feeds should be established where feasible to help defray maintenance costs at specific facilities.

Goal – Make optimal use of recreational opportunities offered by the area's natural environment.

Objectives

- Facilities should be designed to complement the surrounding natural quality of the area.
- Whenever possible, the Township, private interests and adjacent units of government should coordinate the development of recreation facilities and programs.
- When feasible, existing facilities should be upgraded before new ones are built.
- Proper maintenance should be ensured for all facilities.
- The Township, concerned organization and individuals should develop programs and incorporate designs to minimize vandalism.
- Sites selected for the development of facilities or parks should be suitable in terms of population served (existing and future) and physical properties of the site.
- Detailed site plans should be developed to guide new development at township-owned as well as other rural recreational sites by the unit of government with primary responsibility for the site.
- Volunteer efforts by citizens and/or service clubs are encouraged whenever and wherever feasible in all aspects of operations and maintenance of recreational areas.

Goal – Facilities should be developed to enhance the cultural, historic, and natural characteristics of the area or site.

Objectives

- Preservation/restoration of historic sites is encouraged.
- Site planning should consider natural topographic and scenic characteristics when planning new facilities or rehabilitating existing ones.
- Identification of meaningful historic areas in the Township should continue.
- Tourist related development should be encouraged, especially in areas already experiencing such use and traffic.
- Information should be easily accessible to travelers in the Township at new or existing sites to inform the public of available amenities and facilities.

Action Plan

Spalding Township benefits from very active citizens and community organizations that are committed to providing recreational facilities and programs for all age groups. The result is the development of an ambitious project list. A majority of the projects will be accomplished with local funds. Larger projects will require funding assistance from non-township sources.

The Spalding Township Board, through the recreation development schedule, planned a number of necessary and valuable recreation projects to enhance the quality of life for all demographic groups. The Board has also recognized the need for maintenance improvements to existing facilities. It is the intent of the Board to encourage Spalding Township to seek out funding and project completion of all projects listed below.

The recreation development schedule highlights the Township’s top priorities as identified from discussions with residents and local community groups as well as input at public meetings as follows:

Recreation Development Schedule		
Spalding Township		
Project Description	Year	Cost Estimate/Funding Sources
Establish a canoe/kayak water trail on Big Cedar River	2022	\$15,000 Grants, Township Funds, Donations
Improvements to the pavilion	2022	\$20,000 Grants, Township Funds, Donations

Construct ice rink (150' by 300')	2022	\$15,000 - \$20,000 Grants, Township Funds, Donations
Construct heated warming room	2022	\$10,000 Township Funds, Donations
Install large barbeque pit in park	2022	\$5,000 Township Funds, Donations
Develop new picnic area and add additional permanent grills	2022	\$1,500 Township Funds, Donations
Place benches in the park and beach areas	2022	\$1,200 Township Funds, Donations

Recreation Development Schedule		
Spalding Township		
Project Description	Year	Cost Estimate/Funding Sources
Ball field improvements and add bleachers	2022	\$10,000 Grants, Township Funds, Donations
Replace basketball hoops and repair	2022	\$5,000 Township Funds, Donations
Improve playground area in the park-build small kid's kingdom	2022	\$45,000 Township Funds, Donations
Develop cross-country ski trails	2022	\$1,500 Township Funds, Donations
Develop accessible fishing areas	2022	\$50,000 Grants, Township Funds, Donations
Establish canoe/kayak launch at Veterans park	2023	\$80,000 Grants, Township Funds, Donations

Acquire land for trail head for canoe/kayak launch and daytime fishing use areas	2023	\$50,000 Grants, Township Funds, Donations
Improve ice rink	2023	\$10,000 Grants, Township Funds, Donations
Improve beach area for swimming	2023	\$3,500 Township Funds, Donations
Thin undergrowth in outlying park area	2023	\$3,000 Township Funds
Participate in select forest cutting and develop new areas	2023	\$2,500 Township Funds

Recreation Development Schedule		
Spalding Township		
Project Description	Year	Cost Estimates/Funding Sources
Improve playground area in park	2023	\$5,000 Township Funds
Improve fishing spots	2023	\$25,000 Grants, Township Funds, Donations
Improve cross-country ski trails	2023	\$2,000 Township Funds, Donations
Make swimming hole improvements	2023	\$3,500 Township Funds, Donations
Start nature trail	2023	\$10,000 Township Funds, Donations, Grants
Improve areas on Big Cedar River for general uses with purchases of land for more recreation use	2024	\$50,000 Grants, Township Funds, Donations

Improve playground area in park	2024	\$3,000 Township Funds
Make improvements to campground area	2024	\$17,000 Township Funds, Donations
Improve cross country ski trails	2024	\$2,000 Township Funds, Donations
Improve accessible fishing areas	2024	\$15,000 Grants, Township Funds, Donations

Recreation Development Schedule		
Spalding Township		
Project Description	Year	Cost Estimate/Funding Sources
Improve kayak/canoe launch areas and day use fishing	2025	\$50,000 Grants, Township Funds, Donations
Improve nature trail	2025	\$5,000 Grants, Township Funds, Donations
Make improvements to campground area	2025	\$17,000 Township Funds, Donations
Improve cross country ski trails	2025	\$2,000 Township Funds, Donations
Improve accessible fishing areas	2025	\$10,000 Grants, Township Funds, Donations
Improve playground area in park	2025	\$2,500 Grants, Township Funds, Donations

Install dusk to dawn lights in campground and pavilion area	2026	\$15,000 Grants, Township Funds, Donations
Improve small kid's kingdom playground	2026	\$15,000 Grants, Township Funds, Donations
Make improvements to nature trail – add benches	2026	\$2,000 Township Funds, Donations
Improve playground area in park	2026	\$2,500 Township Funds, Donations
Improve campground area (install water and electricity)	2026	\$50,000 Grants, Township Funds, Donations
Improve kitchen area in pavilion	2026	\$40,000 Grants, Township Funds, Donations
Maintain and improve parks as needed	2026	\$10,000 Grants, Township Funds, Donations