



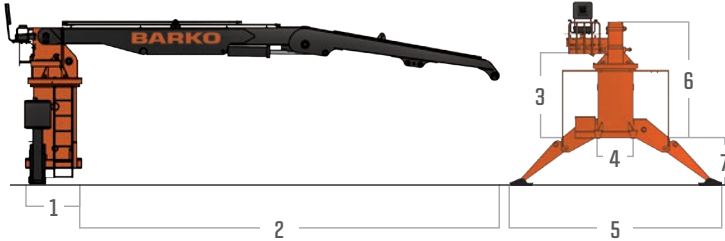
» 160A BACK OF CAB LOADER

SPECIFICATIONS



Specially designed for heavier loads, the Barko® 160A Back of Cab Knuckleboom Loader provides added reach to increase work productivity. Equipped with a wide array of standard features, the 160A lasts longer and performs harder on every job, all at a low total cost of operation.

SPECIFICATIONS



DIMENSIONS

1	3' 5" (104 cm)	5	15' (457 cm)
2	24' 9" (753 cm)	6	8' 5" (257 cm)
3	5' 11" (180 cm)	7	3' 3" (99 cm)
4	2' 10" (86 cm)		

Total Operating Weight 9,750 lbs (4,423 kg) loader with standard boom (excluding attachment and oil)

POWER

Source Customer supplied power take-off

HYDRAULICS

Tank 42 gal. (159 L) with externally serviceable suction screens, 13 micron return line filter, sight gauge

Pump Triple gear pump producing 31/23/14.5 GPM (118/87/55 LPM) at 1,500 RPM

Operating Pressure 2,500 psi (172 bar) main system

Valves Sectional control type with mechanical joysticks

Features Heavy-wall tubing and 4-wire hose; independent swing system with direct-linked foot controls, rotary manifold to allow continuous rotation

BOOM

Structure Fabricated tube type design with all welded construction; bronze bushings with grease grooves at boom pivot points

Standard Boom 27' (823 cm) straight

Horizontal Reach 26' 4" (803 cm) from pivot

Vertical Reach 36' 3" (1,105 cm) from ground, when mounted on 44" (112 cm) truck frame

Cylinders Features Hydraulic cylinders with wear rings on glands and pistons; heavy wall honed steel tubing; heat-treated cylinder rods with heavy chrome plating

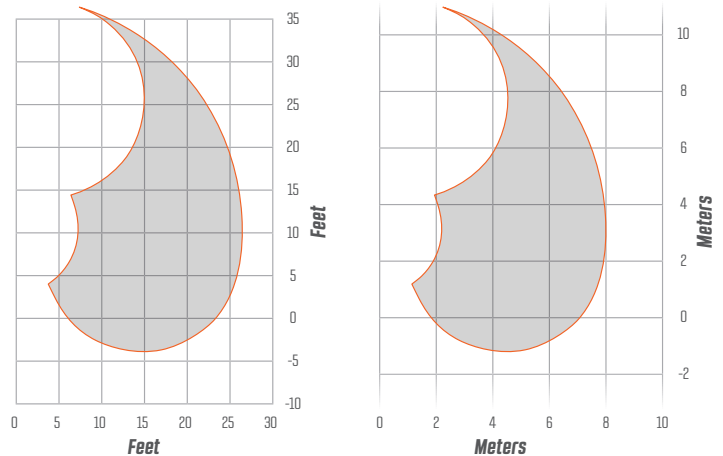
Main Boom (2) 6" x 36" (152 x 914 mm) with 2.5" (63.5 mm) rods

Stick Boom 7" x 30" (178 x 762 mm) with 3" (76 mm) rods

SWING SYSTEM

Rotation Continuous rotation on 39" (991 mm) turntable bearing, powered by twin motors and planetary swing drives

BOOM SWEEP



MAXIMUM FRONT LIFT CAPACITY

27' (8.2 m) straight boom, less attachment.

Radius	Lift
10' (3.0 m)	18,860 lbs (8,555 kg)
15' (4.6 m)	12,730 lbs (5,774 kg)
20' (6.1 m)	9,580 lbs (4,345 kg)
25' (7.6 m)	6,570 lbs (2,980 kg)
Full Reach	2,500 lbs (1,134 kg)

FEATURES & OPTIONS

OPERATOR PLATFORM

Rotating platform with beneath-the-seat style valve mounting and foot swing pedal

Fold-down seat with armrests

STABILIZERS/SUBFRAME/PADS

(1) set of independently operated 13' 4" (406 cm) foldaway stabilizers with
 (2) 6" x 17" (152 x 432 mm) cylinders with 3" (76 mm) rods and bolt-on load locks

STANDARD FEATURES

Mounting bolts and support plates supplied

Dual ladders with non-slip treading

Load securing posts

OPTIONS

Stick boom heel racks

Log rest

*See complete listing of options at www.barko.com.

* Specifications are subject to change.



BARKO HYDRAULICS, LLC

One Banks Ave.
Superior, WI 54880

P: 715.395.6700
info@barko.com | www.barko.com



1 Year	Full machine and attachment
2 Years	Powertrain and major hydraulic components
3 Years	Machine structure

WARRANTY